

A large red gantry crane is lifting a long, rectangular concrete bridge segment. The crane's structure is made of red metal beams and ladders. Several thick cables are attached to the top of the concrete segment. In the background, another similar concrete segment is already in place, supported by pillars. The sky is clear and blue. The right side of the image has a blue overlay with white text.

Friendship.

One of the most beautiful
qualities of true **friendship** is
to understand and to be
understood.

enjoy!

荣誉榜

Success.

The secret of **success** is to
do the common things
uncommonly well.

enjoy!



01 About BOYOUN

We are the reliable partner for the formwork and scaffolding systems in your project.

02 Our Products

BOYOUN products are characterized through their innovative design, intelligent mechanical features and practical details.

03 Reference Projects

As a reliable partner, we are supporting our customers with innovative products and services.

04 Our Clients

We at BOYOUN make every effort to support our customers in the best possible way.

「About BOYOUN.」

About BOYOUN

Boyoun, founded in 2005, is one of China's leading manufacturers of formwork and scaffolding. In addition to the plant in Binzhou city, Shandong province, China, 6 rental bases across China mainland are operated. At Boyoun we offer various formwork, climbing, shoring and scaffolding solutions - for sale and rental - in residential and commercial high-rise construction, bridge and road engineering.

The company's annual production capacities now are increased to 50,000 tons of formwork, scaffolding and mechanical equipment. Meanwhile we also provide 40,000 tons of required formwork and scaffolding materials for rental in the last year. The company employs over 400 employees now and has a sales office in Beijing. And we continue to expand to many countries rapidly, including The United Arab Emirates, Malaysia, Singapore, Pakistan, Russia, South Africa, Brazil, America.

Boyoun is constantly developing and improving, always on the lookout for advantageous, new materials and unconventional solutions. On the basis of ISO 9001 and ISO 14001, all Boyoun products comply with the most stringent requirements in terms of quality and environment.

Our international management stands for in-depth expertise. With the knowledge and understanding of local requirements, the right formwork and scaffolding systems are developed to meet all needs worldwide. Our goal is to be even closer to our customers around the world in the future and to be able to serve them even better and faster.

Business profile



We are a formwork and scaffolding manufacturer based on Asia. We aim to change the world with constant innovations. True!



| We are
improving



The quality is demonstrated

We perform constant quality controls at each phase of production, monitoring all processes to guarantee the quality of our products. We perform thorough follow-ups on the worksite, where the true utility of each piece is ultimately demonstrated.

Always keeping in mind the benefits for our customers

We are the one you need because we see ourselves in the role as the provider of ideas and support in order to develop the best solution together with our customers for meeting the individual requirements in each case. We see ourselves not only as efficient providers of high-quality formwork and scaffolding technology. Instead, keeping a close eye on the business of our customers, their benefits and added value are our top priority in everything we do.



01

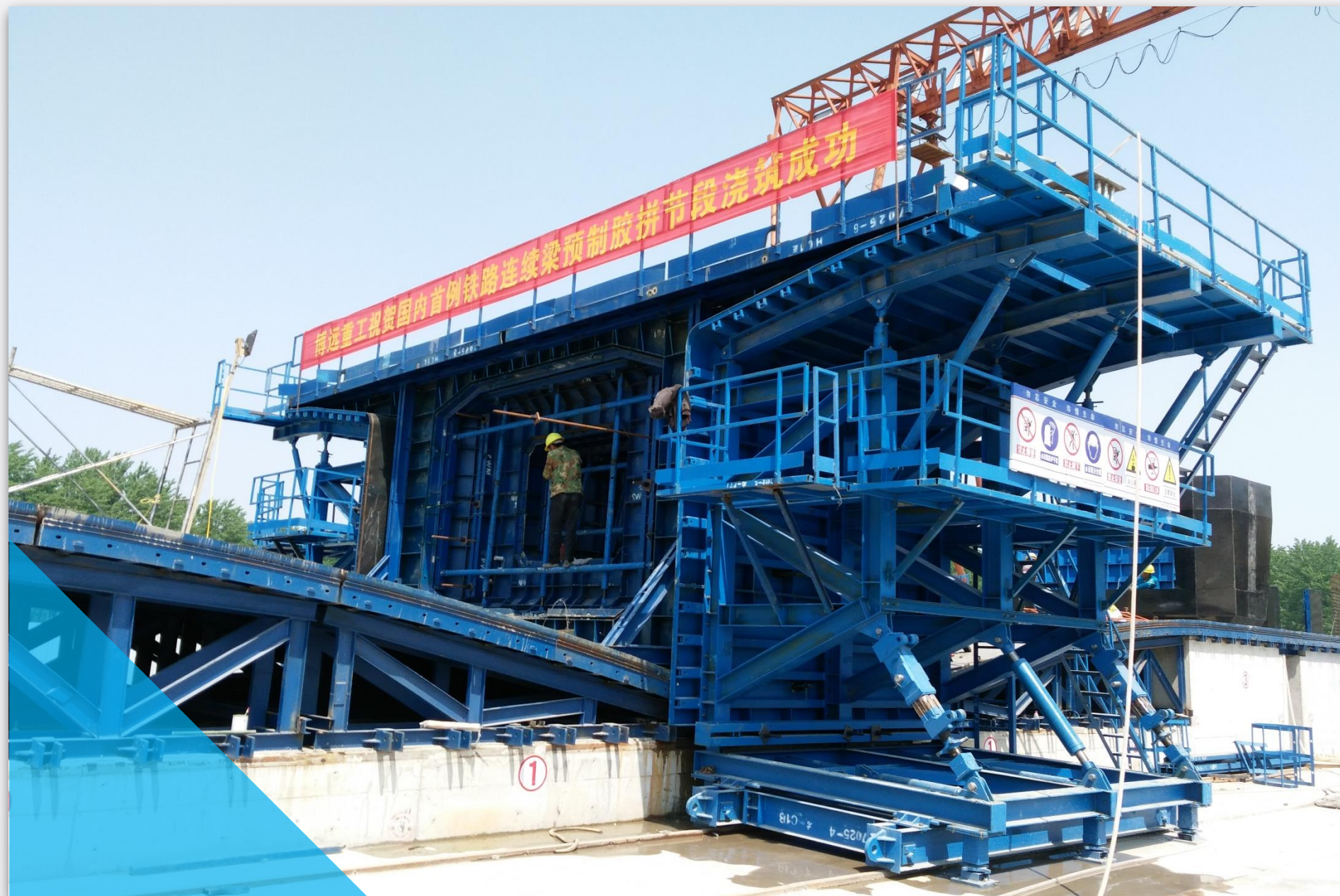
High product quality for long service life

We are the one you need because BOYOUN engineers plan and design formwork and scaffolding solutions while taking into account the technical requirements, boundary conditions during the application as well as respective individual customer requirements.

02

「Our Products.」

Our products



Precast Segmental Box Girder

Segmental assembly formwork system is applied to precast cantilever segmental assembly girder. It is new style non-standard equipment. We have launched BY1507 Automatic precast segmental box girder formwork system with the advantages of less land occupation, easy to operate, less restricted by topography, easy beam plant layout, high utilization for formworks and pedestal and shortened the construction period greatly.

Our products



Cantilever Form Traveler

Form traveler is widely used for the construction cast-in-situ of balanced cantilever bridges. CFT can be customized to meet clients' requirement. According to structure, they can be classified as truss traveler (including rhombic, triangular, bow-string etc.), Cable stayed traveler (including triangular and pre-stressed), profile steel traveler and hybrid traveler. CFT design principles: light weight; simple, strong and stable structure; moved, mounted and stripped easily; strong reusability; small deformation under force; adequate space under traveler and providing a big construction operation face for bars and formwork construction operation.

Our products



U-Beam Formwork

With the rapid development of urban rail transit project, the U-Beam is used more widely viaduct road. Currently, U-Beam is one of the most innovative viaduct that was used in urban rail transport. It have the advantages of noise-reduction good effect, low building height, high space utilization and good appearance. With the progress of technology, construction method changes from cast-in-place to precast hoisting. Use double crane lifting or gantry crane lifting to hoisting the U-Beam. Precast U-Beam formwork structure: outer side formwork, inner formwork, bottom formwork, support lead screw, work platform, Vibrator, crawling ladder, blanking plate etc.

Our products



T-Beam Formwork

The bearing structure is formed by the combination of reinforced concrete top flange with beam rib, this beam bridge called T-Beam bridge. Because the section shape of the main beam like the letter “T” . T-Beam was divided into highway T-Beam and railway T-Beam. According to the form, it can be divided into simple supported T-Beam and continuous T-Beam.

T-Beam is pre-casted at the beam fabrication yard. The T-Beam formworks are composed by high and low side formwork, bottom formwork and end formwork. Compared with the rectangular beam, T-Beam can save concrete, reduce self-weight and improve the spanning capacity.

Our products



Pier Formwork

According to piers' type to find the commonality achieved that the pier formworks are rentable and recyclable. It minimizes the customers' cost. There are column pier, top round pier, cone pier, Y shape pier, hyperbola pier, vase shape pier, linear type pier, V shape pier, rectangle pier etc. They are the important components in highway bridge, overpass bridge, railway bridge, Pedestrian bridge, ramp bridge etc. Pier formwork can be divided into have tie bolt type and no tie bolt type (include truss structure). According to the cross section shape of pier cap, it can be divided into top round bottom round, top square bottom round, top square bottom square, top round bottom square etc.

Our products



Tunnel Lining Trolley

The trolley developed by Boyoun is concentrated on commonality, humanity construction. Structure reliable , convenient operation, good tunnel surface etc. The trolley widely used in highway, railway, water projects, hydraulic engineering, public projects, and defense industry projects.

There are 6m, 7.5m, 9m, 10.5m, 12m different specifications. Customers can choose it according to tunnel length and construction period. The lining trolley can be divided into side & roof arch type, fully round acerate-beam type, the bottom platform needle-beam type, fully round through type etc.

Our products



Scaffolding

Scaffolding system can be jointed together at any angle with the right coupler. They are wonderful succedaneum of standard scaffoldings and steel props.

Scaffolding widely used in construction and real estate which are much cheaper and convenient. Scaffolding pipe are multi-functional, they can be cut at any length as the customers' requirement. Scaffolding pipe match with couplers are good choice for outside masonry construction and also proper for inside concrete support.

Certifications



「Reference Projects.」

Our projects



Teheran expressway project

This project has begun its construction in the early a few decades ago. The project was forced to stop because of The Iran-Iraq War. The project total length is 140km, but stopped only for 30km. With the rapid development of Iran's economy in recent years, large exports of oil greatly enhance the confidence of the people and government of Iran to speed up the construction process of urbanization. So many shutdown projects are restarted. This project is one of them.

BOYOUN supplied

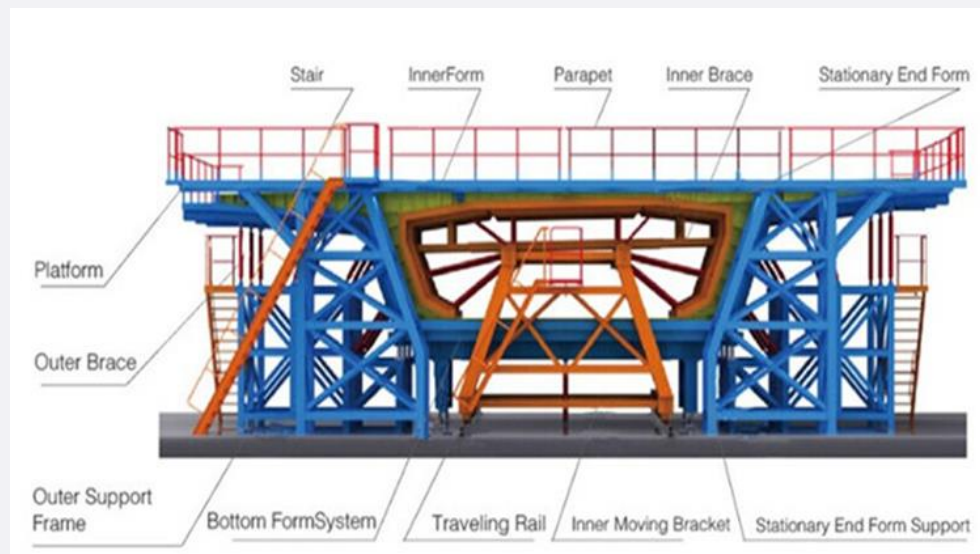
- Construction
- Calculation
- Segmental assembly box girder formworks
- Site guidance

Our projects



Foshan Urban Rail Transit Project

25.3km Foshan Urban Rail Transit line2 project with the total length of 32.41km, elevated length 6.4km, underground length 6.4km, with 17 stations. The investment is about 700 million dollars. CCCC First Harbor Engineering Company take the construction of this project.



BOYOUN supplied

- Worker training
- Calculation
- Precast segmental box girder formworks
- Site guidance

Our projects



Pakistan Dhan Gali Bridge Project

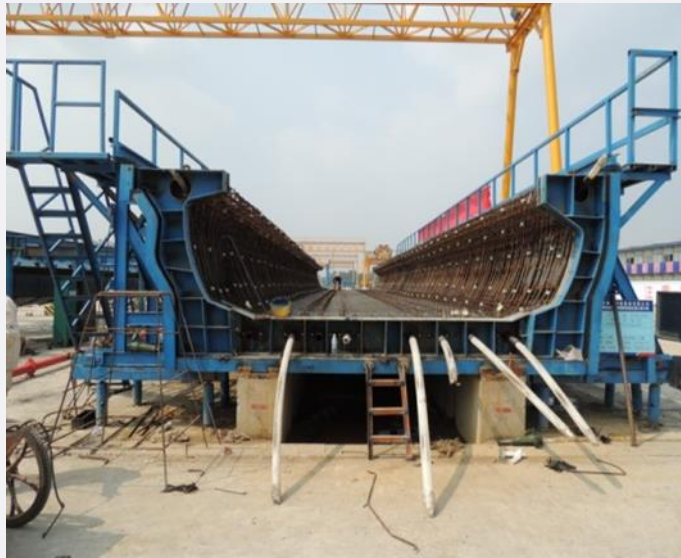
It's a 85m+170m+85m pre-stressed, post-tensioned continuous concrete rigid frame bridge with a total length of 340 meters pier height 36.85m. Bridge over the Jhelum River which located in the Dadyal sub division of Mirpur district in Pakistan.



BOYOUN supplied

- Cantilever Form Travelers
- Calculation

Our projects



Qingdao Urban Rail Transit Project

According to the published plans, ultimately there will be 16 lines in total with a combined length of 836 km. All work is scheduled to be finished prior to 2050. The construction of the first line, Line 3, began on November 30, 2009. With \$1.9 billion of funding, it is expected to be fully operational in late 2015 with a total of 22 stations, a total length of 24.8 km and a daily ridership of 235 000 passengers. Line 3 began trial passenger operation on December 16, 2015

BOYOUN supplied

- Technical Consulting
- U-Beam formwork design
- U-Beam formworks
- Site guidance

Our projects



Reference-Tajikistan Tunnel Project

The total length of tunnel is 5286m, altitude of nearly 3000 meters, the geological situation is very complicated. It's the longest tunnel in central Asia, also China's longest single tunnel in overseas construction. The tunnel is an important achievement of the cooperation between China and the Tajikistan, also another important achievement of friendly cooperation between China and the countries of Central Asia.

BOYOUN supplied

- Technical Consulting
- Tunnel Lining Trolley
- Formwork design
- Site guidance

Latest projects

CFT



China-Maldives everlasting friendship bridge



Precast Segmental Box Girder



CCC Huiwanshen MRT



Tunnel Lining Trolley



MRT line 2 Malaysia



U-beam formwork



Philippines MRT project

「Our Clients.」

Our clients



Our contacts



Address

Room 1805, building No.3,
Cuijingbeili,
Tongzhou district, Beijing
101100, China
come visit us!

Online

Tel: +86-10-88083575
wangx@boyoun.com
Web: www.boyoun.com

「Thank you.」